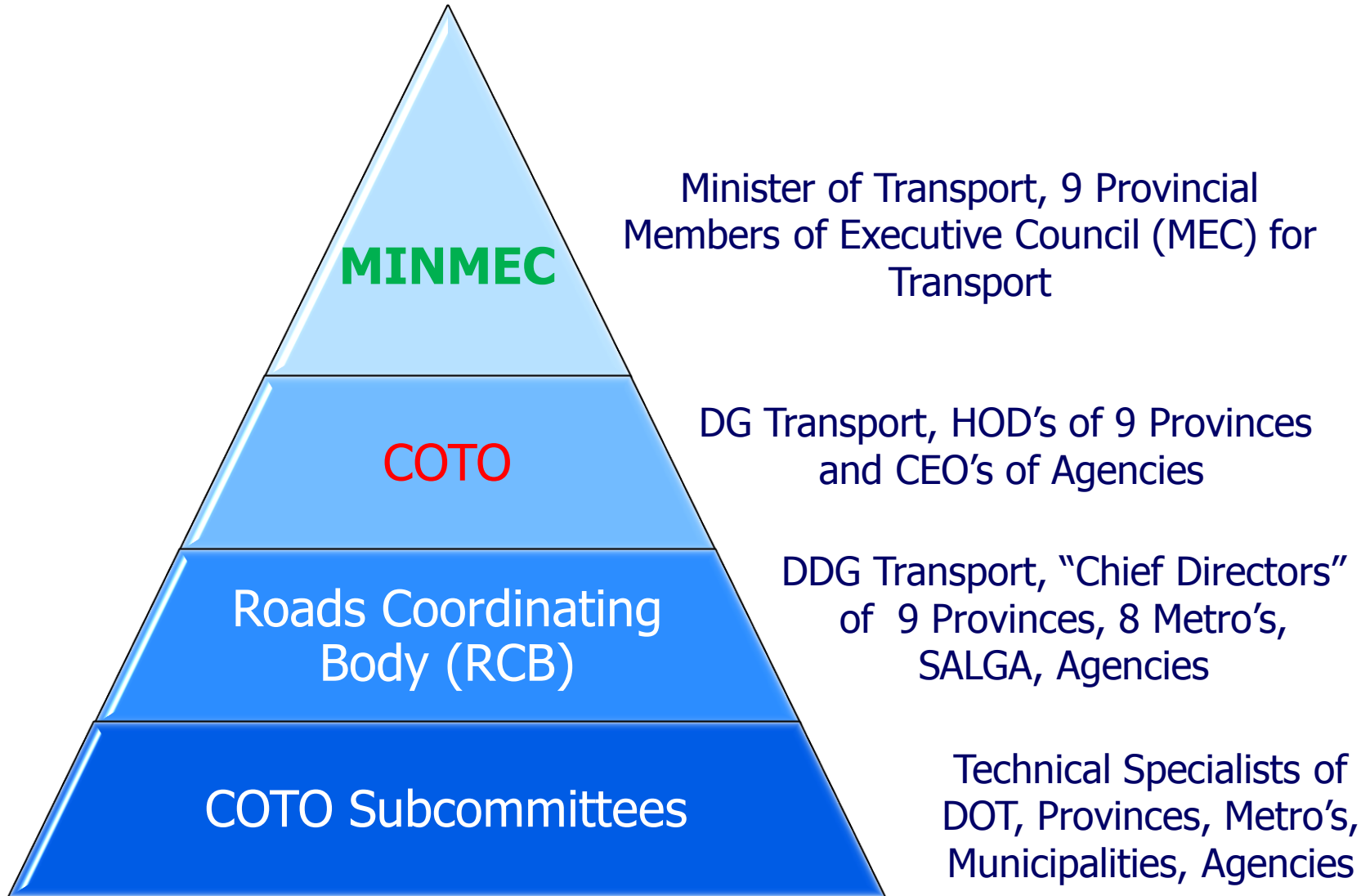


TRH 26 – South African Road Classification and Access Management Manual

Louw Kannemeyer

COTO Hierarchy



Definitions

- **Technical Recommendations for Highways (TRH)**
 - The Technical Recommendations for Highways consists of a series of publications that describe recommended practice for various aspects related to highway engineering. The documents are based on South African research and experience at the time of drafting. The documents are primarily aimed at ensuring uniform practice throughout South Africa, and use thereof is recommended. *(It is not the only document to be used)*

- **Technical Methods for Highways (TMH)**
 - The Technical Methods for Highways consists of a series of publications in which methods are prescribed for use on various aspects related to highway engineering. The documents are primarily aimed at ensuring the use of uniform methods and standardisation throughout South Africa, and use thereof is compulsory. *(It is the only document to be used)*

TRH/TMH PROCEDURE

Step 1

- COTO Subcommittee identify needs for new or revision of existing TRH/TMH
- COTO Subcommittee forms workgroup
- Panel of Industry Experts appointed to assist workgroup (if required)

Step 2

- COTO Subcommittee Workgroup draft new TRH/TMH – number of Working Drafts (WD)
- Once workgroup is satisfied, Working Draft Final converted to Committee Draft (CD) and submitted to COTO Subcommittee for review and comment
- When approved by COTO Subcommittee, Committee Draft (CD) is submitted to Roads Coordinating Body for wider review and comment
- All comments received are reviewed and incorporated where applicable and Committee Draft Final (CDF) prepared

Step 3

- COTO/RCB Workshop arranged to discuss Committee Draft Final (CDF)
- All written comments received, reviewed and incorporated where applicable into Committee Draft Final (CDF)

TRH/TMH PROCEDURE

Step 4

- Committee Draft Final (CDF) converted to Draft Standard (DS) and submitted by RCB to COTO for approval as Draft Standard TRH/TMH
- Draft Standard (DS) released to wider industry for implementation

Step 5

- Draft Standard (DS) TRH/TMH then introduced to Industry through workshops
- Draft Standard (DS) TRH/TMH utilised in industry for 2 year period, and comments/feedback provided to COTO subcommittee

Step 6

- At end of 2 year period all written comments received are collated and reviewed by COTO/RCB Subcommittee and incorporated where applicable
- Draft Standard (DS) converted to Final Standard (FS) and submitted by RCB to COTO for approval as Final Standard (FS) TRH/TMH

TRH/TMH PROCEDURE

Step 7

- Final Standard (FS) TRH/TMH then released to industry
- Should changes between Draft Standard (DS) and Final Standard (FS) be extensive then further industry workshops might be arranged

Step 8

- Final Standard (FS) TRH/TMH used for maximum of 5 years in industry before revision considered

TRH/TMH PROCEDURE - STATUS

TRH/TMH	Status
TRH26 Road Classification and Access Management	Step 5
TRH27 Services in Road Reserves	Step 5
TMH15 Engineering Service Contributions	Step 5
TMH16 Traffic Impact Assessments Vol 1&2	Step 5
TMH17 Trip Data Manual	Step 5

Manual Legal Status

- **Working Draft (WD)** - Working Drafts (WD) have no legal standing.
- **Committee Draft (CD)** - Committee Drafts (CD) have no legal standing.
- **Draft Standard (DS)** - Draft Standards (DS) have full legal standing.
- **Final Standard (FS)** - Final Standards (FS) have full legal standing.

Why TRH 26 ?

Authority	Paved	Gravel	Total
SANRAL	21,490	0	21,490
Provinces - 9	47,261	226,273	273,534
Metros - 8	51,682	14,461	66,143
Municipalities	37,691	219,223	256,914
Total	158,124	459,957	618,081
Un-Proclaimed (Estimate)		131,919	131,919
Estimated Total	158,124	591,876	750,000

Un-Proclaimed Roads = Public roads not formally gazetted by any Authority

Road Infrastructure Strategic Framework for South Africa 2006 (RISFSA) identified need for uniform approach at classifying the road network *and assigning responsibility in long term*

Rank	Country	Road length (km)
	World	64 285 009
1	United States	6 586 610
2	India	4 689 842
3	China	4 237 500
4	Brazil	1 751 868
5	Japan	1 210 251
6	Canada	1 042 300
7	Russia	982 000
8	France	951 200
9	Australia	823 217
10	South Africa	750 000
11	Spain	681 298
12	Germany	644 480
13	Sweden	572 900
14	Italy	487 700
15	Indonesia	437 759
16	Turkey	426 906
...
34	Dem Rep of Congo	153 497
45	Zimbabwe	97 267
54	Zambia	91 440
55	Tanzania	91 049
70	Madagascar	65 663
80	Angola	51 429
72	Namibia	64 189
98	Mozambique	30 331
104	Botswana	25 798
122	Malawi	15 451
148	Lesotho	7 438
161	Swaziland	3 594
173	Mauritius	2 066
193	Seychelles	508
SADC Total		1 449 720

Thank you!

SANRAL
48 Tambotie Avenue
Val de Grace
Pretoria
0184

PO Box 415
Pretoria
0001

Telephone: +27 12 8448 000
Fax: +27 12 8448200

Louw Kannemeyer

louwk@nra.co.za

FRAUD HOTLINE: 0800 204 558

Website: www.sanral.co.za



Reg. No. 1998/009584/30

